



**new**

## Foster Multidecks

Introducing Foster levels of performance and reliability to the Multideck Market

Keep your products fresh and appealing and maximize your sales with Foster's exciting new range of Multidecks. Our Multideck products offer excellent open display frontage and even temperature retention throughout.

### Premier Multidecks

- Modern refrigeration system allows the product to operate at a reduced noise level whilst performing energy efficiently
- Excellent temperature retention - ensures that even your most delicate products maintain their freshness and appeal
- Perfect to maximise display - low fronted, with wide opening allows for 30% extra display capacity compared to standard multidecks
- Deep shelf display area maximises your product offering especially at busy periods
- Storage capacities from 810 to 1266 litres
- Tall frontage display area with full length glass end panels maximises visibility
- Choice of two finishes - high quality stoved paint finish in white or silver grey
- 3 long life fluorescent tubes (treble the life expectancy of standard tubes)
- Supplied with transparent ticket strips as standard
- Integral forced air refrigeration system for optimum temperature performance
- Airflow creates protective air curtain maintaining product temperature
- Fully automatic defrost for efficient operation
- Plug in for instant and flexible use
- Removable front unit cover allows easy access for service, minimising down time
- Shelving holes available at 3cm intervals allowing for greater tailoring of product display



Intelligent Controller with easy to read digital display



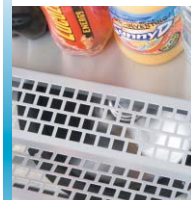
Internal lights with on/off switch and light covers ensure shatter proof illumination



Product delivered with shelves pre-fitted and transparent ticket strip - meaning minimum time required for user setup

## Pro Multidecks

- Slim design ideal in stores and outlets where space is at a premium
- Full length glass end panels increase display visibility
- 3 sizes available in 2 finishes
- Storage capacities from 415 to 975 litres
- High quality 304 stainless steel finish available
- High quality stoved paint finish on white model
- Integral forced air refrigeration system for optimum temperature performance
- Large capacity multi-deck: maximises display area for minimal footprint
- Robust construction for durability in operation
- 3 long life fluorescent tubes (treble the life expectancy of standard tubes)
- Supplied with transparent ticket strips as standard
- Shelving holes available at 3cm intervals allowing for greater tailoring of product display
- Fully automatic defrost for efficient operation
- Removable front unit cover allows easy access for service, minimising down time
- Plug in for instant and flexible use
- Castors on 90 & 130 models as standard Adjustable feet on 195 models



Modern refrigeration system allows the product to operate at a reduced noise level whilst performing energy efficiently

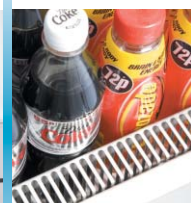


## Slim Multidecks

- Maximum display for minimum footprint and cost - 650mm narrow depth
- Perfect to get your products on display to capitalize on those impulse buys
- Choice of high quality 304 stainless steel finish or white stoved paint finish
- Maintains even temperature throughout to optimise product storage
- Storage capacities from 290 to 520 litres
- 3 long life fluorescent tubes (treble the life expectancy of standard tubes)
- Supplied with transparent ticket strips as standard
- Acrylic riser packs available as an option to prevent merchandise slipping if shelves are set at a tilted angle.
- Shelving holes available at 3cm intervals allowing for greater tailoring of product display
- Fully automatic defrost for efficient operation
- Easily removable unit cover for cleaning
- Plug in for instant and flexible use



Night blind as standard: reduces energy consumption when display is not required



Integral forced air refrigeration system

## Mini Multidecks

- Low height display case ideal for reaching impulse buyers near pay points
- Display capacity for minimal floor space
- Tempt them: Give your customers great access to your products in a well lit low level display case
- Alternative heights designed to fit seamlessly with existing display cases /end of aisle arrangements
- Storage capacities from 1200 to 1670 litres
- 4 sizes available (across different heights and widths)
- Integral forced air refrigeration system
- Silver grey or white stoved paint finish
- 2 long life fluorescent tubes (treble the life expectancy of standard tubes)
- Supplied with transparent ticket strips as standard
- Shelving holes available at 3cm intervals allowing for greater tailoring of product display
- Fully automatic defrost for efficient operation
- Plug in for instant and flexible use
- Easily removable unit cover for cleaning
- Acrylic riser packs available as an option to prevent merchandise slipping if shelves are set at a tilted angle.
- Available on castors as an option for maximum manoeuvrability and flexibility



Internal lights with on/off switch and light covers ensure shatter proof illumination

# Multidecks

MODEL NOMENCLATURE EXPLANATION

Example: FMPREM 125 HW

<b>FMPREM</b> <i>Model Group</i>	<b>125</b> <i>Height (cm)</i>	<b>H</b> <i>High Temp</i>	<b>W</b> <i>White Finish</i>
-------------------------------------	----------------------------------	------------------------------	---------------------------------

## Premier temperatures & capacities



1250 x 849 x 1980



1250 x 849 x 1980



1925 x 849 x 1980



1925 x 849 x 1980

Model No.	FMPREM 125HW	FMPREM 125HG	FMPREM 195HW	FMPREM 195HG
Capacity (Litres)	810	810	1266	1266
Temperature Rating	M1 (0/+4°C)	M1 (0/+4°C)	M1 (0/+4°C)	M1 (0/+4°C)
Finish	White	Silver Grey	White	Silver Grey
No. of Shelves (inc. base)	6	6	6	6
Shelf Width x Shelf Depth (mm)	1197 x 450mm	1197 x 450mm	934 x 450mm	934 x 450mm
Base Depth (mm)	468mm	468mm	468mm	468mm
Power Supply (230/1/50)	13amp	13amp	16amp	16amp



Premier Side Profile

## Pro temperatures & capacities



880 x 735 x 1940



880 x 735 x 1940



1280 x 735 x 1940



1280 x 735 x 1940



1950 x 735 x 1940



1950 x 735 x 1940

Model No.	FMPRO 90HW	FMPRO 90HS	FMPRO 130HW	FMPRO 130HS	FMPRO 195HW	FMPRO 195HS
Capacity (Litres)	415	415	625	625	975	975
Temperature Rating	M2 (+2/+4°C)	M2 (+2/+4°C)	M1 (0/+4°C)	M1 (0/+4°C)	M1 (0/+4°C)	M1 (0/+4°C)
Finish	White	Stainless Steel	White	Stainless Steel	White	Stainless Steel
No. of Shelves (inc. base)	5	5	5	5	5	5
Shelf Width x Shelf Depth (mm)	796 x 400mm	796 x 400mm	1197 x 400mm	1197 x 400mm	934 x 400mm	934 x 400mm
Base Depth (mm)	493mm	493mm	493mm	493mm	493mm	493mm
Power Supply (230/1/50)	13amp	13amp	13amp	13amp	16amp	16amp



Pro Side Profile

## Slim temperatures & cap.



700 x 650 x 1780



700 x 650 x 1780



880 x 650 x 1780



880 x 650 x 1780



920 x 690 x 1860



1200 x 650 x 1780

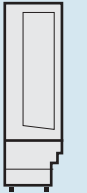


1200 x 650 x 1780



1240 x 690 x 1860

Model No.	FMSLIM 70HW	FMSLIM 70HS	FMSLIM 90HW	FMSLIM 90HS	FMSLIM 90HSLS	FMSLIM 120HW	FMSLIM 120HS	FMSLIM 120HSLS
Capacity (Litres)	290	290	375	375	375	520	520	520
Temperature Rating	M2 (+2/+4°C)	M2 (+2/+4°C)	M2 (+2/+4°C)	M2 (+2/+4°C)	M2 (+2/+4°C)	M2 (+2/+4°C)	M2 (+2/+4°C)	M2 (+2/+4°C)
Finish	White	Stainless Steel	White	Stainless Steel	Stainless Steel	White	Stainless Steel	Stainless Steel
No. of Shelves (inc. base)	4	4	4	4	4	4	4	4
Shelf Width x Shelf Depth (mm)	629 x 390mm	629 x 390mm	809 x 390mm	809 x 390mm	809 x 390mm	1129 x 390mm	1129 x 390mm	1129 x 390mm
Base Depth (mm)	510mm	510mm	510mm	510mm	510mm	510mm	510mm	510mm
Power Supply (230/1/50)	13amp	13amp	13amp	13amp	13amp	13amp	13amp	13amp



Slimline Side Profile

## Mini temperatures & capacities



880 x 660 x 1360



880 x 660 x 1360



1200 x 660 x 1360



1200 x 660 x 1360



880 x 660 x 1560



880 x 660 x 1560



1200 x 660 x 1560



1200 x 660 x 1560

Model No.	FMMINI 90/130HW	FMMINI 90/130HG	FMMINI 120/130HW	FMMINI 120/130HG
Capacity (Litres)	206	206	288	288
Temperature Rating	M1 (0/+4°C)	M1 (0/+4°C)	M1 (0/+4°C)	M1 (0/+4°C)
Finish	White	Silver Grey	White	Silver Grey
No. of Shelves (inc. base)	4	4	4	4
Base Depth (mm)	460mm	460mm	460mm	460mm
Power Supply (230/1/50)	13amp	13amp	13amp	13amp



Mini 130 Side Profile

Model No.	FMMINI 90/150HW	FMMINI 90/150HG	FMMINI 120/150HW	FMMINI 120/150HG
Capacity (Litres)	262	262	365	365
Temperature Rating	M1 (0/+4°C)	M1 (0/+4°C)	M1 (0/+4°C)	M1 (0/+4°C)
Finish	White	Silver Grey	White	Silver Grey
No. of Shelves (inc. base)	5	5	5	5
Base Depth (mm)	460mm	460mm	460mm	460mm
Power Supply (230/1/50)	13amp	13amp	13amp	13amp



Mini 150 Side Profile

## features and options

- Standard
- Optional

FINISH	ACCESSORIES
high quality stoved paint finish	levelling feet
30.4 stainless steel finish	castors*
	night blind
	acrylic riser pack

### 3 Different Shelf Depths

Shelf	1st	2nd	3rd
Shelf Depth (mm)	290	340	390

### 4 Different Shelf Depths

Shelf	1st	2nd	3rd	4th
Shelf Depth (mm)	240	290	340	390

## temp rating

M1 (0/+4°C) suitable for Fruit & Vegetables, Dairy Products, Beverages, Sandwiches & Meat Products  
 M2 (+2/+4°C) suitable for Fruit & Vegetables, Dairy Products, Beverages & Sandwiches

Model Group	Standard	Optional
PREM MULTIDECKS	●	●
PRO MULTIDECKS	●	●
SLIM MULTIDECKS	●	●
MINI MULTIDECKS	●	●

\* Levelling feet on FMPRO 195 HW/S as standard (not available on castors)